

From 1Q26 to 2Q26

# MES, ESR and Video Surveillance solutions



# MES Equipment

## Managed Ethernet Switches



### ROS6 OS

- MES2300-xx
- MES3300-xx
- MES5400-xx
- MES5500-xx onwards



### ISS OS

- MES24xx
- MES3400
- MES37xx



### ROS4 OS

- MES23xx
- MES33xx
- MES35xx

# ROS6 OS



2300, 3300, 5332A, 5400, 5500, 5600, 5700

BFD for static routes → [6.6.12](#)

Micro-BFD (BFD over LAG) → [6.6.13](#)

NSF L3 → [6.6.13](#)

Precision Time Protocol (PTP) → [6.6.13](#)

Parallel Redundancy Protocol (PRP) → [6.6.13](#)



[6.6.12](#) scheduled 31 May 2026

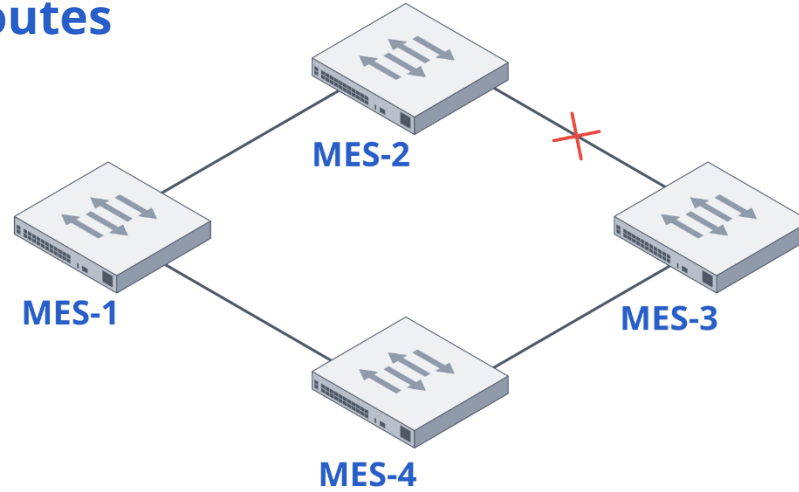
[6.6.13](#) scheduled 31 Aug 2026

# Bidirectional Forwarding Detection

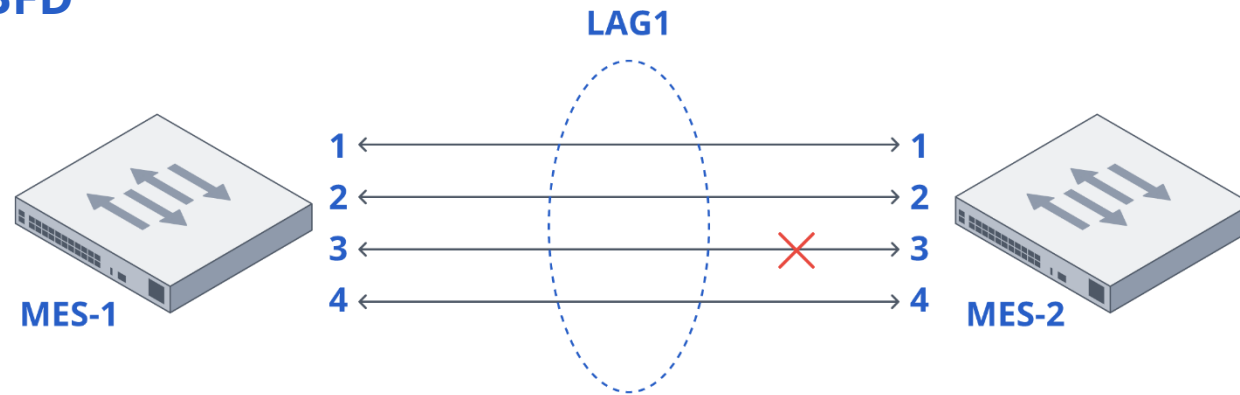


BFD for static routes and Micro-BFD

## BFD for static routes



## Micro-BFD



# ROS6 OS



2300, 3300, 5332A, 5400, 5500, 5600, 5700

## ROS4 functionality transfer, including:

- FTP client
- 'source-interface' specification for FTP
- PPPoE IA
- Local account lock on multiple login fails (brute-force attack protection)
- 'passwords time block' for blocking users



Features to be available  
in version [6.6.12](#)

# ROS6 OS



2300, 3300, 5332A, 5400, 5500, 5600, 5700

## Data Center Bridging

- Enhanced Transmission Selection (ETS)
- Explicit Congestion Notification (ECN)



Features to be available  
in version [6.6.13](#)



## Information Security

SSH version update → [10.4.4](#)

## Optimization

'show-running' execution optimization → [10.4.5](#)

## Stack development

IGMP Snooping adaptation → [10.4.6](#)

## Security

ACL logging and source interface → [10.4.6](#)



[10.4.4](#) scheduled 30 Jun 2026

[10.4.5](#) scheduled 31 Aug 2026

[10.4.6](#) scheduled 25 Dec 2026

# MES Hardware



## Data center switches

1Q26



Released

2Q26



Released

4Q26



### MES5320-24

Throughput

1.6 Tbps

Interfaces

24 × 25G SFP28

2 × 100G QSFP28



### MES5700-32

Throughput

25.6 Tbps

Interfaces

32 × 400G QSFP56-DD

2 × 10G SFP+



### MES5600-24

Throughput

11.2 Tbps

Interfaces

24 × 100G QSFP28

8 × 400G QSFP56-DD

2 × 10G SFP+

# MES Hardware



Multi-gigabit switches

2Q26



## MES2310-48DP

Throughput

**440 Gbps**

Interfaces

**48 × 2.5G PoE/PoE+**

**4 × 25G SFP28**

3Q26



## MES2310-12XU

Throughput

**440 Gbps**

Interfaces

**12 × 10G PoE/PoE+/PoE++**

**4 × 25G SFP28**

# MES Hardware



## Industrial switches

### 3Q26



Support for PTP and PRP

#### MES3510S-08P

Throughput

**24 Gbps**

Interfaces

**8 × 1G PoE/PoE+**

**4 × 1G SFP**

Power supply

**DC**



Support for PTP and PRP

#### MES3510DS-24F

Throughput

**128 Gbps**

Interfaces

**16 × 1G SFP**

**4 × 10G SFP+**

**8 × 1G Combo**

Power supply

**AC/DC, 2 hot-swappable power supplies**



# ESR Equipment

## Eltex Service Routers



1.40.4 (17 May 2026)

## Clustering

Configuration synchronization  
for units connecting to cluster

## DNS

'source-address' specification for DNS

## Routing

- L2 traffic filtering (MAC Access List)
- 'source-address' specification for TFTP server
- 'source-address' specification for NTP in specific VRF



1.40.4 (17 May 2026)

## **Certificate authority (CA)**

ESR can be used as certificate authority

## **Monitoring**

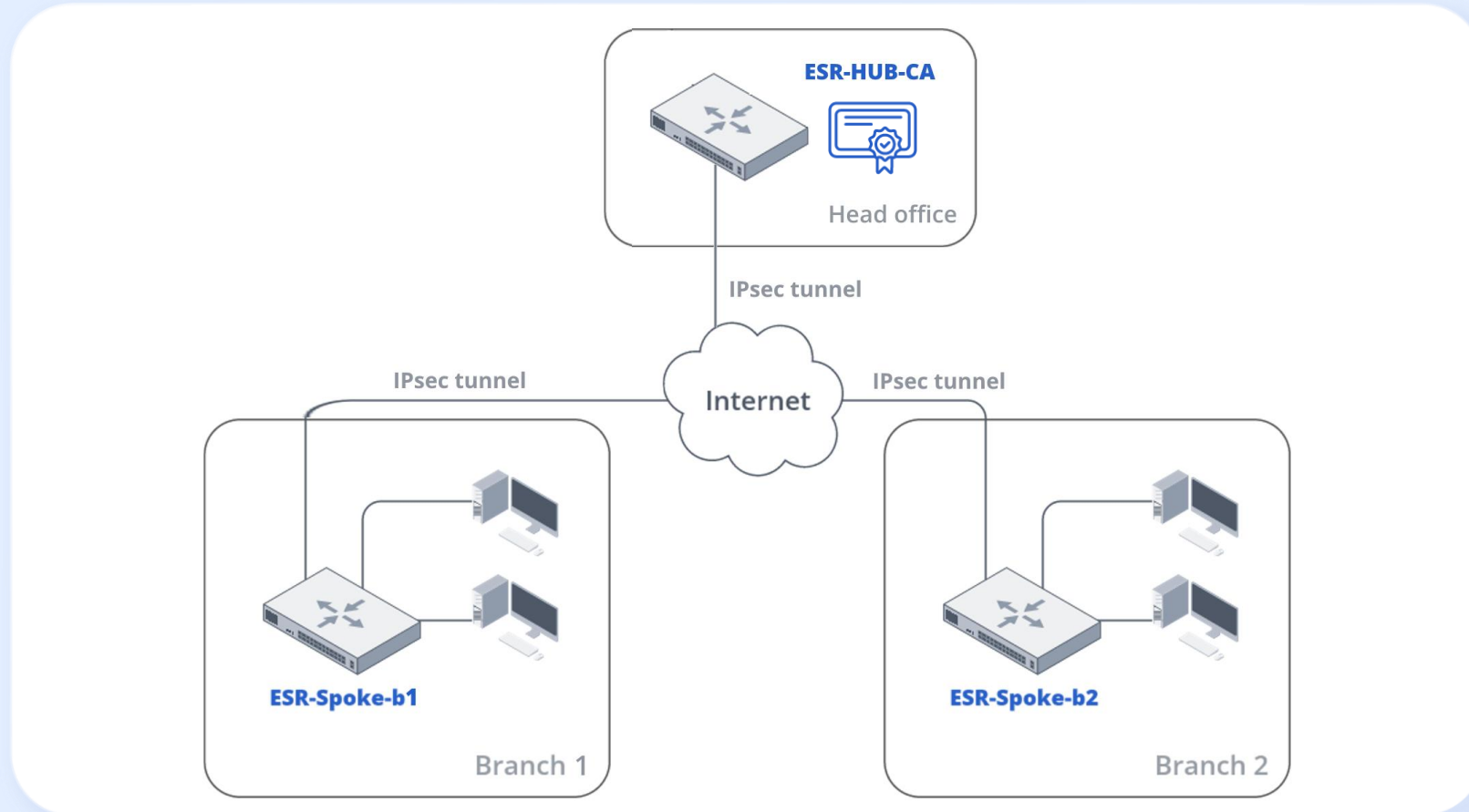
Added more OIDs, including:

- Number of SNMP NAT sessions
- BGP prefix summary
- Last reboot details

## **Deep Packet Inspection**

List of supported applications extended

## Certificate authority (CA)





1.46.0 (17 Jul 2026)

## Routing

PIM SM (PIM Sparse Mode)

## BGP development

- BGP Route Flap Damping
- BGP soft reconfiguration

## Security

- BGP FlowSpec
- GeoIP
- Fail2Ban

## Web GUI

Web UI with basic functionality is available

# Management systems



## ECCM

**v2.6** (06 Mar 2026)

- REST API added
- Active problems visualization
- L1 and port-channel management via SNMP SET

**v2.7** (06 May 2026)

- EVPN Multihoming configuration (MES)
- IP address configuration on ports (MES)
- Monitoring of routing tables (MES)
- IP fabric configuration via OSPF

## NAICE

**v1.1** (06 Mar 2026)

- Web authorization via LDAP/MS AD
- Password policies for system users
- System settings available in Web UI
- Peeper integration for monitoring

**v1.2** (26 Jun 2026)

- 2-factor authorization for Web UI
- Support for EAP-TTLS
- Restrict number of connections for an AD account

# ESR Hardware



Progress after 1Q

1Q26



Released

2Q26

3Q26



## ESR-3150

Interfaces

8 × 1G Combo

4 × 10G SFP+

Throughput

21.7 Gbps (FW)



## SCS-32

Interfaces

32 × RS-232 (RJ-45)

2 × 1G

2 × 10G SFP+

Power supply

AC/DC

Redundant power supplies



## ESR-15R-4G

Interfaces

4 × 1G

2 × 1G SFP

LTE

Cat 12

2 × SIM-card slots



## ESR-31-4G

Interfaces

8 × 1G

2 × 10G

SFP+

6 × 1G SFP

LTE

Cat 12

2 × SIM-card slots



# Video Surveillance

IP-cameras and EVI Platform

# EVI Platform 1.5.0 Release

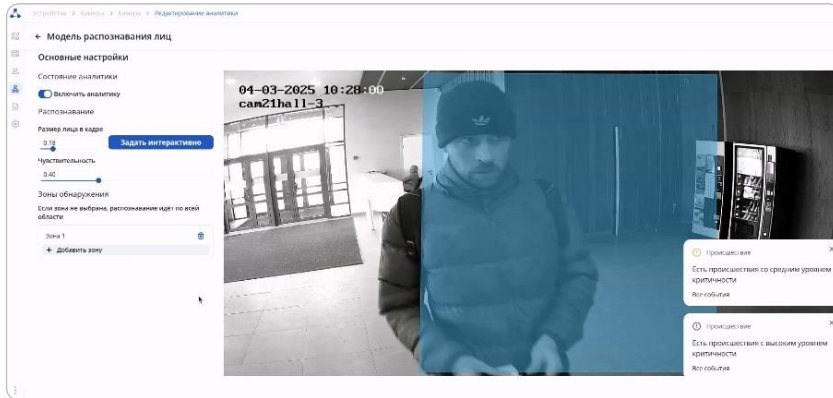


Released on 27 Mar 2026

Front-end

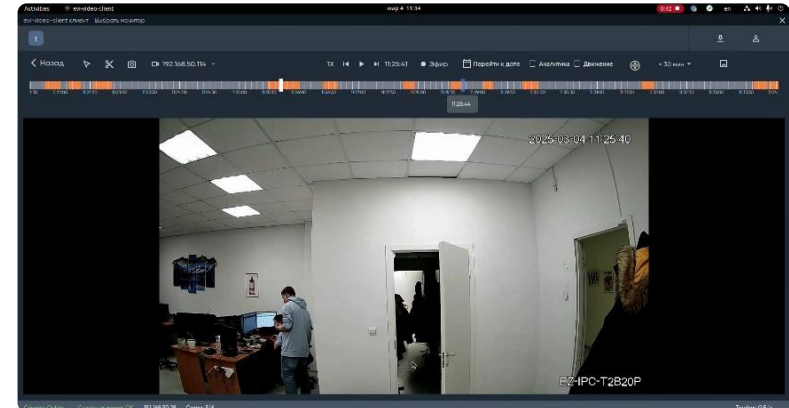
## EVI Web (Chrome)

- Improved playback in the web player
- Added PTZ support in the web interface



## EVI Video Client (Windows/Linux)

- New player interface
- Support for hotkeys



Back-end

## EVI Perimeter

- Redundancy of EVI services
- Native integration with Eltex cameras
- New "Live Stream" page



## EVI SCUD

- Improved guest and guest visit management
- Various improvements and optimization



## EVI Analytics

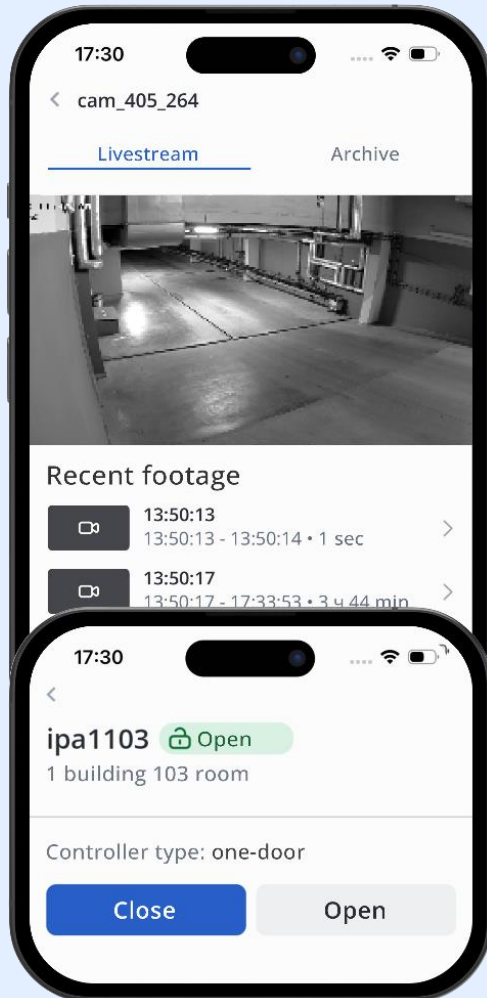
- Non-PACS facial recognition
- Non-PACS number plate recognition
- Analytics notification support
- Advanced motion detector settings



# EVI Mobile



## 1Q development and 2Q plans



### 1Q26 (v1.4 – v1.6)

- Card-like equipment display
- Equipment and event filtering
- Event summary
- Missed event notifications
- Advanced local presets for event display

### 2Q26 (v1.7 – v1.9)

- PIN-based logging
- Role model support
- Video wall-like stream display

# Video Hardware



Progress after 1Q

1Q26

2Q26



## SV-BA331-E4C

Image sensor and focal distance  
1/2.7" CMOS 4M, fixed 2.8 mm

Image enhancement  
**DWDR**

Protection level  
**IK10, IP67**



## SV-BB341Z-E2B

Image sensor and focal distance  
1/2.8" CMOS 4M,  
**varifocal 2.8 - 13.5 mm**

Image enhancement  
**True WDR**

Protection level  
**IP67**



## SV-BA301-E rev.B

Image sensor and focal distance  
1/2.7" CMOS 4M, fixed 2.8 mm

Image enhancement  
**DWDR**

Protection level  
**IP67**



## SV-BA314-E rev.B

Image sensor and focal distance  
1/2.7" CMOS 4M, fixed 2.8 mm

Image enhancement  
**DWDR**

Protection level  
**IP67**



**Q&A**



We are always open to discuss, develop  
and customize products to your needs



+7 (383) 274-10-01  
274-48-48

[eltex@eltex.ru](mailto:eltex@eltex.ru)



Novosibirsk, Russia, 630047  
29V, Okružhnaya St.

Monday - Friday  
09:00–18:00 (GMT+7)



[eltex-co.com](http://eltex-co.com)